

INSTALLATION INSTRUCTIONS FOR PATIO DOORS

IMPORTANT: Read and understand the entire procedure before attempting to install the unit. Please note that this is a supplemental instruction. Installation instructions will also be attached to the purchased unit.

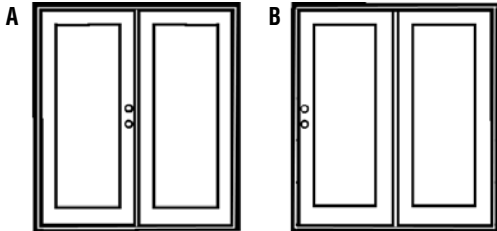
NOTE: Some dwelling designs/conditions may require special installation steps. Consult an architect, design professional and/or code official for additional guidance. **If disturbing existing paint, take proper precautions if lead paint is suspected (commonly used before 1979).** For proper management of lead paint, see www.epa.gov/lead

CAUTION: Wear safety glasses and gloves when installing the patio unit. Unit will be heavy. At least two people are needed for installation.

Required tools are as follows:

- Level (24")
- Framing square
- Hammer
- Nail set
- 3" galvanized finishing nails
- Wooden shims
- Wood filler
- Putty knife
- Caulking gun
- Exterior caulk
- Measuring tape
- Phillips screwdriver

STEP 1: Select Patio Unit



| A - French Door | | B - Center-Hinged Door | |
|-----------------|---------|------------------------|-------------|
| Size | R.O. | Size | R.O. |
| 5'-0" | 60"x80" | 5'-0" | 60-5/8"x80" |
| 5'-4" | 64"x80" | 5'-4" | 64-5/8"x80" |
| 6'-0" | 72"x80" | 6'-0" | 72-5/8"x80" |

Note: For outswing units deduct 1-1/4" from the height. For sizes and designs not shown, consult store associate.

STEP 2: Determine Rough Opening & Door Frame Size

- R.O. = Rough Opening
 - Rough opening width is measured from the inside of the stud frame to the inside of the opposite stud.
 - Rough opening height is measured from the sub-floor to the bottom of the header.
 - Rough opening allows for room to shim on each side of unit.
 - To measure the rough opening for a unit that is being replaced, remove interior casing and measure from stud to stud and from floor to header.
- NOTE:** It is easier to reduce the R.O. size by shimming or adding wall studs than it is to enlarge a R.O.
- 2" x 4" or 2" x 6" construction simply refers to the width of lumber used to frame the rough opening.
 - Jamb is wider than framing lumber to allow the jamb to overlap the wallboard, panelling, siding etc.
 - Brickmould covers the gap between the rough opening and the door jamb on the exterior wall and door casing should be applied on the interior

STEP 3: Prepare Rough Opening

A solid level sub-floor is absolutely essential for proper door unit installation. Do not proceed until the sub-floor is both solid and level. Clean and clear work area.

NOTE: Apply flashing in a manner to prevent entry of water into the wall cavity in accordance with flashing manufacturer's instructions



STEP 4: Prepare Door Unit.

Remove all packaging from door unit. Some units may have a wood screw attached through the top of the header and into the top of the inactive door of a French unit. Remove this screw. Be careful when handling unit to prevent doors from swinging open.

STEP 5: Caulk Sub-Floor and Sill



Variations in threshold designs may require that the caulk lines be applied directly to the bottom of the unit to ensure a weather-seal. Inspect the bottom of the sill for any flat surfaces or sill grooves. Apply caulk to sill bottom flat surfaces and grooves and also bottom of jambs. Apply a triple bead of caulk along sub-floor where unit will be positioned.

STEP 6: Place Unit in Rough Opening

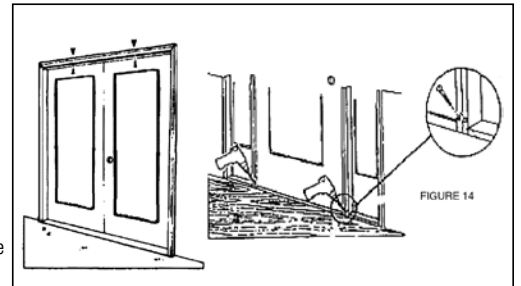
Do not attempt to handle without assistance. From the outside of the unit, center the prehung unit into the rough opening, sill first. Be careful not to disturb the caulking on the sub-floor or sill bottom. The brickmould (not supplied with all units) should rest up against the exterior finished wall.



STEP 7: Shim and Fasten Unit

NOTE: Units intended for installation in high velocity windstorm regions may require additional points of attachment.

NOTE: Install shims in the correct location and in the proper sequence. Shim tightly at the bottom of the unit at points indicated. Shim the top side of the frame as indicated. Install shims until there is a 1/8" gap between the top of the door and the frame header. There should also be a consistent gap (1/8") between the door and the vertical astragal (for French Door Units).



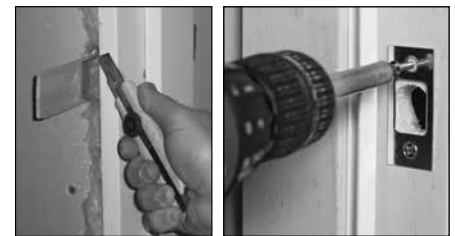
STEP 8: For French Units Only

NOTE: Most units do not have pre-drilled holes for the top and bottom flush bolts on the inactive door. Close door firmly against frame weatherstrip. Slide top and bottom flush bolts up against header and sill. Mark where bolts make contact with the header and sill. Drill 3/8" diameter holes on the marks to receive bolts. (1-1/2" deep minimum).



STEP 9: Insulate and Install Hardware

Score shims with razor knife and snap flush with frame face. Insulate any gaps between the frame and rough opening with fiberglass blanket insulation. (Do not use spray-in foam.) Install interior/exterior trim around frame unit. Install hardware according to the manufacturer's instructions. Use long security screws to attach deadbolt strike plate.



STEP 10: Caulk Doorway

Caulk all exterior corners and all around the brick or siding. Caulk the sill on both latch and hinge sides from the edge of the sill crown along the edge where the sill and jamb or brickmould meet. Caulk the front sill edge where the sill and the sub-floor meet. Caulk the top corners where the header and jambs meet, starting at the weatherstrip and working to the face of the brickmould. Caulk the perimeter where the exterior trim meets the brick or siding trim. If the door is center-hinged or has a sidelite, caulk around the mullions where the mullions contact the sill and header.



Masonite
the beautiful door™